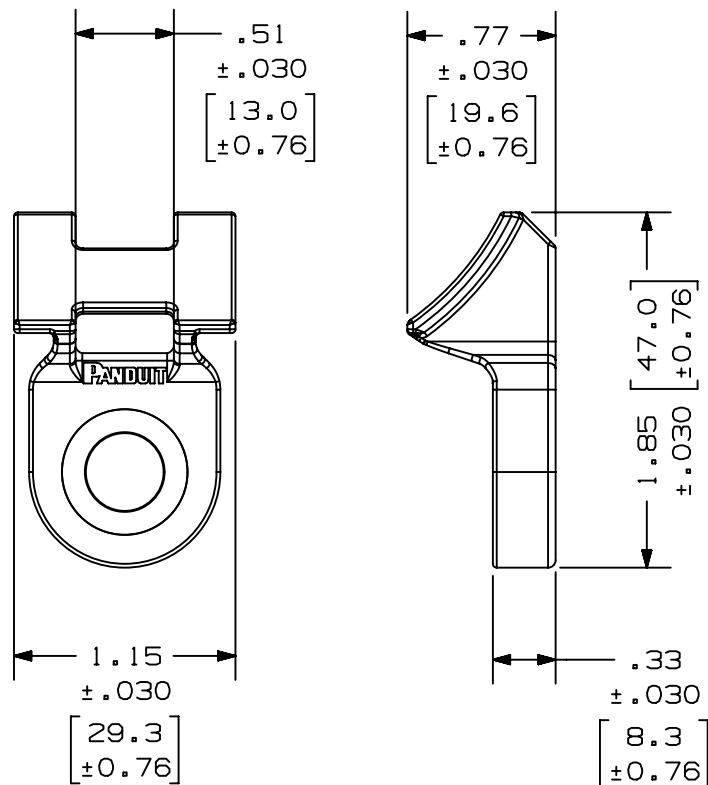


2

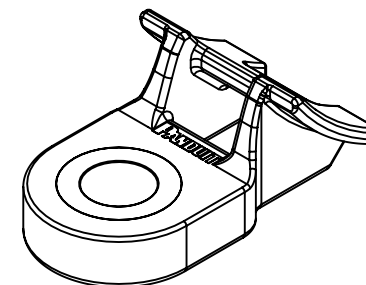
1

THIS COPY IS PROVIDED ON A RESTRICTED BASIS AND IS NOT TO BE USED IN ANY WAY DETRIMENTAL TO THE INTERESTS OF PANDUIT CORP.



NOTES:

1. SEE WWW.PANDUIT.COM FOR PART NUMBER SUFFIX DESIGNATION CONCERNING PACKAGE SIZE, PART MATERIAL AND PART COLOR.
2. DIMENSIONS IN [] ARE METRIC.
3. THE METAL INSERTS ARE ZINC-PLATED, BASED ON ASTM B633-15 STANDARD.
4. ALL MATERIALS AND COMPONENTS USED MEET THE MATERIAL RESTRICTIONS OF RoHS (EUROPEAN DIRECTIVE 2011/65/EU ON THE RESTRICTION OF HAZARDOUS SUBSTANCES) AS PROPOSED BY THE RoHS TECHNICAL ADAPTATION COMMITTEE.
5. MAX. BOLT TORQUE SPEC. IS 114 lbf-ft.



ITEM	RECOMMENDED BOLT SIZE	P/N	DIA AA ±.030 [0.76]	WEIGHT lbs(g)/100pcs	FOR USE WITH THE FOLLOWING PANDUIT CABLE TIES
1	5/16" MB	TMEH4S8-D350	0.33 (8.3)	4.15 lbs (1882 g)	MINIATURE; INTERMEDIATE;
2	3/8" M10	TMEH4S10-D350	0.40 (10.3)	3.73 lbs (1692 g)	STANDARD; LIGHT HEAVY;
3	1/2" M12	TMEH4S13-D350	0.51 (12.9)	3.03 lbs (1377 g)	HEAVY; EXTRA HEAVY

PART NUMBER					
HD HIGH TORQUE MOUNT FAMILY					
TITLE					
HD HIGH TORQUE MOUNT FAMILY					
CUSTOMER DRAWING					
ITEM REVISION NAME			00149EAA/01		
DATASET FILE NAME			00149EAA_DC/01		
			THIRD ANGLE PROJECTION		
MATERIAL			POLYAMIDE 6.6 IMPACT MODIFIED, HEAT STABILIZED, UV RESISTANT, BLACK		
DRAWING NUMBER			00149EAA_DC		
DRAWN BY			CHN-MZ SG		
DATE			FEB/14/19		
CHK			DE		
SCALE			NONE		
SHEET 1 OF 1			A		

01	07.26.19	BDK	DAEI	TGS	RELEASED TO PRODUCTION	049851
00A	FEB/14/19	CHN-MZSG	DE	PM	INITIAL RELEASE	
REV	DATE	BY	CHK	APR	DESCRIPTION	ECN

2

1

B

A



A

B



A

A

B



A

A

B



A

A

B



A

A

B



A

A

B



A

A

B



A

A

B



A

A

B



A

A

B



A

A

B



A

A

B



A

A

B



A

A

B



A

A

B



A

A

B



A

A

B



A

A

B



A

A

B



A

A

B



A

A

B



A

A

B



A

A

B



A

A

B



A

A

B



A

A

B



A

A

B



A

A

B



A

A

B



A

A

B



A

A

B



A

A

B



A

A

B



A

A

B



A

A

B



A

A

B



A

A

B



A

A

B



A

A

B



A

A

B



A

A

B



A

A

B



A

A

B



A

A

B



A

A

B



A

A

B



A

A

B



A

A

B



A

A

B



A

A

B



A

A

B



A

A

B



A

A

B



A

A

B



A

A

B



A

A

B



A

A

B



A

A

B



A

A

B



A

A

B



A

A

B



A

A

B



A

A

B



A

A

B



A

A

B



A

A

B



A

A

B



A

A

B



A

A

B



A

A

B



A

A

B



A

A

B



A

A

B



A

A

B



A

A

B



A

A

B



A

A

B



A

A

B



A

A

B

