

NOTES:

A. ELECTRICAL SPECIFICATIONS:

1. SUPPLY VOLTAGE: 12V±10%
 2. IDLE CURRENT: 25 MILLIAMPS MAX. (NO ATTACHED DEVICES)
 3. OPERATING CURRENT: 65 MILLIAMPS MAX. (NO ATTACHED DEVICES)
 4. OPERATING TEMPERATURE: 0° TO 50° CELSIUS
- ⚠ CAUTION!: PRODUCT CAN BE DAMAGED IF WIRED INCORRECTLY.
FOLLOW WIRING INSTRUCTION IN J-EA-K1-01-M.

B. MATERIALS

1. FRONT COVER - PC PLASTIC
2. CONTROLLER HOUSING - PC PLASTIC
3. BUTTONS - ABS PLASTIC
4. BUTTON FRAME - ABS PLASTIC
5. GASKET - SILICONE RUBBER

C. CONNECTIONS:

1. JA = DOOR ACCESS CONNECTOR
2. JB = LOCKOUT ALARM CONNECTOR
3. JC = TAMPER SWITCH OUT PUT CONNECTOR
4. REFER TO USER INSTRUCTIONS (J-EA-K1-01-M)
FOR MORE DETAIL

D. 2 MOUNTING SCREWS PROVIDED

MOUNT WITH M3.5 SCREWS. HEAD DIAMETER
NOT TO EXCEED 6.0 MILLIMETER.
MAXIMUM TORQUE FORCE = 1.1 N m
MINIMUM TORQUE FORCE = 0.7 N m

E. ONE SUPPRESSOR DIODE PROVIDED.

CAN BE USED WHEN CONNECTING AN EXTERNAL RELAY
(NOT PROVIDED) OR MULTIPLE CONTROLLERS TO A
SINGLE LATCH.

F. SEE ORDERING INFORMATION FOR
COLOR AND LOGO OPTIONS.

G. FOR INDOOR USE ONLY

southco

PROPRIETARY ITEM - EXCEPT FOR USES EXPRESSLY
GRANTED IN WRITING INFORMATION DISCLOSED
HEREON IS CONFIDENTIAL AND ALL RIGHTS PATENT
AND OTHERWISE ARE RESERVED BY SOUTHCO, INC.

EA KEYPAD ASSEMBLY

DATE 31AUG2007
DRAWN MJS
CHKD TC
SCALE .5:1

DRAWING NUMBER
J-EA-K1-01

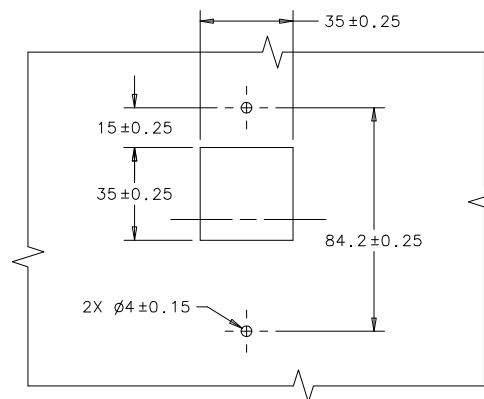
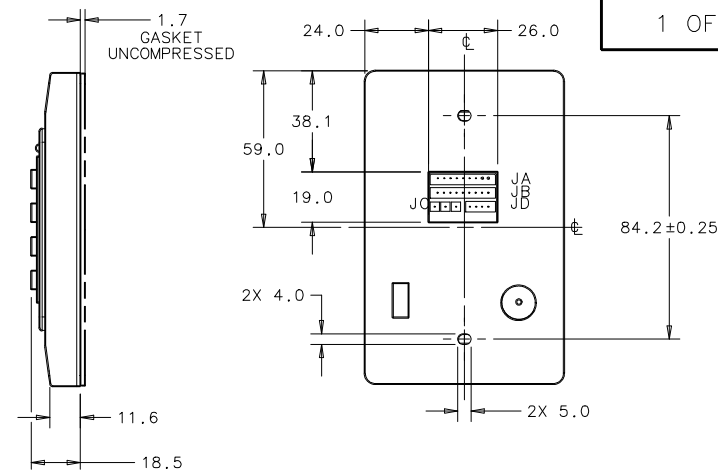
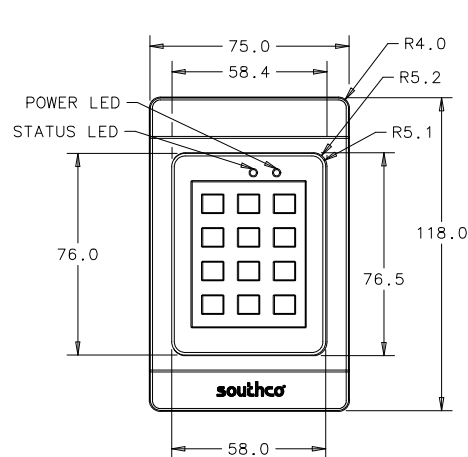
REV	DATE	DRAWN/CHKD	DESCRIPTION	ITEM	PART NUMBER
A	25FEB2008	CW/MJS	PRN: P2008-0180	ASSEMBLY	SEE LEGEND
B	21NOV2008	VSR/VSB	PRN: P2008-0580	USER INSTRUCTIONS	00-149-06152
C	27JAN2009	ACH/MJS	PRN: P2009-0038		

MILLIMETERS

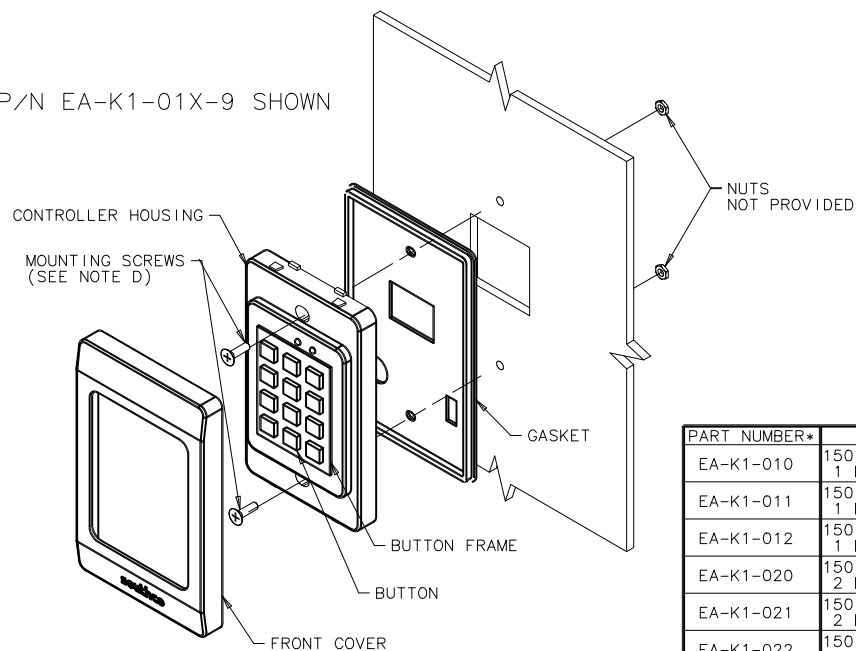
ALL DIMENSIONS WITHOUT
TOLERANCES ARE FOR
REFERENCE ONLY.

THIRD ANGLE PROJECTION
A3
PAPER
SIZE

1 OF 2



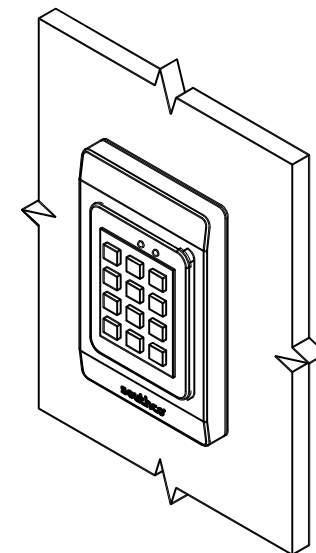
P/N EA-K1-01X-9 SHOWN



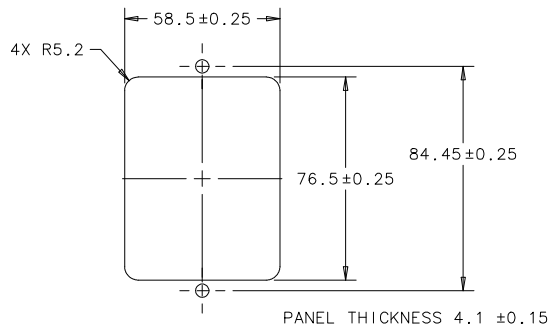
ORDERING INFORMATION

PART NUMBER*	DESCRIPTION	FRONT COVER	CONTROLLER HOUSING	BUTTON	BUTTON FRAME
EA-K1-010	150 USER ACCESS CODE 1 DOOR CONTROLLER	BLACK	BLACK	BLACK WITH WHITE MARKINGS	BLACK
EA-K1-011	150 USER ACCESS CODE 1 DOOR CONTROLLER	WHITE	WHITE	WHITE WITH BLACK MARKINGS	BLACK
EA-K1-012	150 USER ACCESS CODE 1 DOOR CONTROLLER	COOL GRAY 2 C	COOL GRAY 2 C	WHITE WITH BLACK MARKINGS	BLACK
EA-K1-020	150 USER ACCESS CODE 2 DOOR CONTROLLER	BLACK	BLACK	BLACK WITH WHITE MARKINGS	BLACK
EA-K1-021	150 USER ACCESS CODE 2 DOOR CONTROLLER	WHITE	WHITE	WHITE WITH BLACK MARKINGS	BLACK
EA-K1-022	150 USER ACCESS CODE 2 DOOR CONTROLLER	COOL GRAY 2 C	COOL GRAY 2 C	WHITE WITH BLACK MARKINGS	BLACK

* ADD -9 TO PART NUMBER FOR SOUTHCO LOGO (FOR EXAMPLE, EA-K1-010-9)

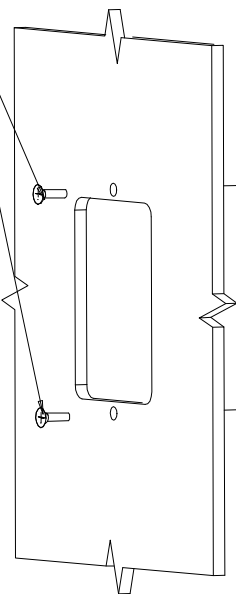


SURFACE MOUNTING



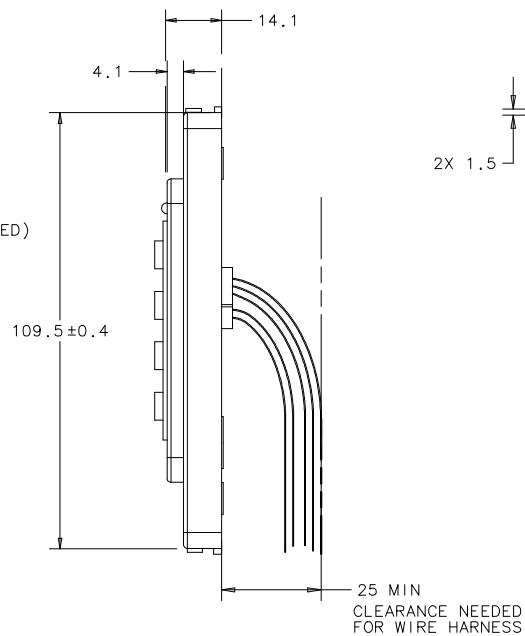
PANEL PREPARATION

M3.5 STUD OR MACHINE
SCREW (NOT PROVIDED)
MIN SCREW LENGTH 17.5mm

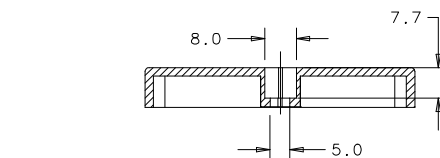


REAR MOUNTING

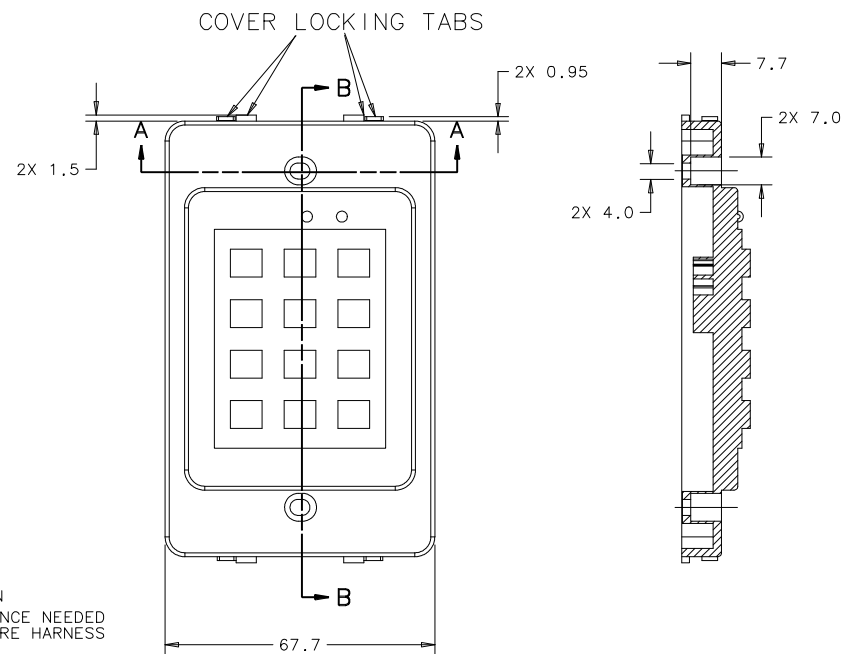
NUTS (NOT PROVIDED)



COVER AND GASKET
REMOVED



SECTION A-A



SECTION B-B

southco

PROPRIETARY ITEM - EXCEPT FOR USES EXPRESSLY
GRANTED IN WRITING INFORMATION DISCLOSED
HEREON IS CONFIDENTIAL AND ALL RIGHTS PATENT
AND OTHERWISE ARE RESERVED BY SOUTHCO, INC.

EA KEYPAD ASSEMBLY

DATE
31AUG2007

DRAWN
MJS

CHKD
TC

SCALE
.5:1

DRAWING NUMBER
J-EA-K1-01

REV	DATE	DRAWN/CHKD	DESCRIPTION	ITEM	PART NUMBER
A	25FEB2008	CW/MJS	PRN: P2008-0180	ASSEMBLY	SEE LEGEND
B	21NOV2008	VSR/VSB	PRN: P2008-0580	USER INSTRUCTIONS	00-149-06152
C	27JAN2009	ACH/MJS	PRN: P2009-0038		

MILLIMETERS

ALL DIMENSIONS WITHOUT
TOLERANCES ARE FOR
REFERENCE ONLY.

THIRD ANGLE PROJECTION

2 OF 2