

southco®PROPRIETARY ITEM - EXCEPT FOR USES EXPRESSLY
GRANTED IN WRITING INFORMATION DISCLOSED
HEREON IS CONFIDENTIAL AND ALL RIGHTS PATENT
AND OTHERWISE ARE RESERVED BY SOUTHCO, INC.

No. 92 "T" AND "L" HANDLE ASSEMBLIES

DATE

25JUN2005

DRAWN

MJS

CHKD

SCALE

1:1

DRAWING NUMBER

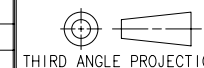
TD-92-3-J

REV

DATE

DRAWN/CHKD

DESCRIPTION

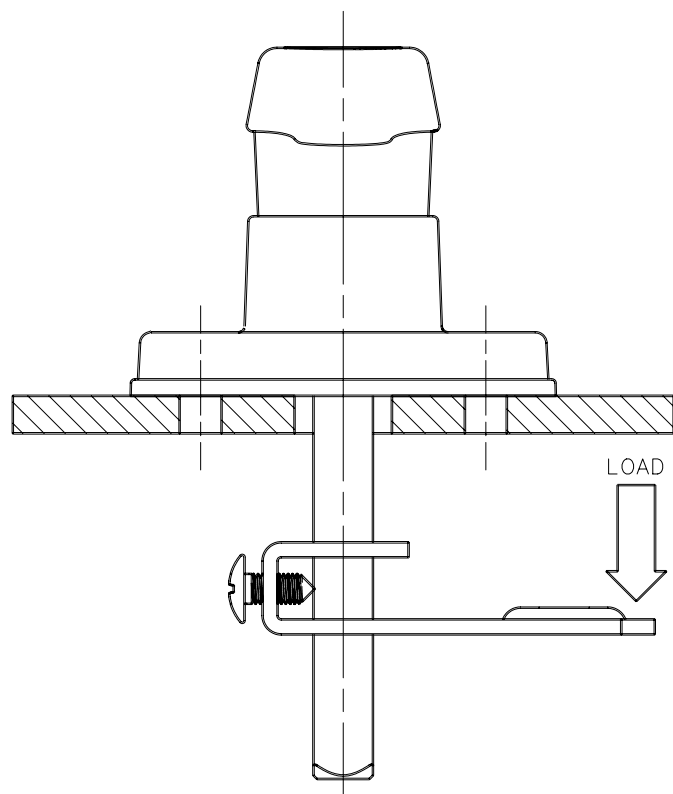


THIRD ANGLE PROJECTION

A4
PAPER
SIZE

SOUTHCO PERFORMANCE GUIDELINES

THE PERFORMANCE GUIDELINES SHOWN ON THIS PAGE ARE SUPPLIED AS A GENERAL GUIDE ONLY, AS CONDITIONS VARY WITH EACH APPLICATION AND METHOD OF INSTALLATION. STRENGTH DATA GIVEN IS FOR FAILURE OF THE PRODUCT OR FOR SUFFICIENT DEFORMATION TO MAKE PRODUCT INOPERABLE. NO SAFETY FACTOR HAS BEEN APPLIED. IT IS RECOMMENDED THAT THE USER REQUEST A PRODUCT SAMPLE FOR TESTING TO DETERMINE THE SUITABILITY OF THE PRODUCT FOR THE PURPOSE INTENDED AND USER'S PARTICULAR APPLICATION.



CAM PART NUMBER	AVERAGE ULTIMATE LOAD ON CAM
92-24-202-12	380 N
92-24-203-12	270 N
92-24-204-12	150 N
92-24-212-12	300 N

NOTE:

AVERAGE ULTIMATE LOAD CAUSES FAILURE OF
THE PRODUCT OR SUFFICIENT DEFORMATION TO
MAKE THE PRODUCT INOPERABLE.