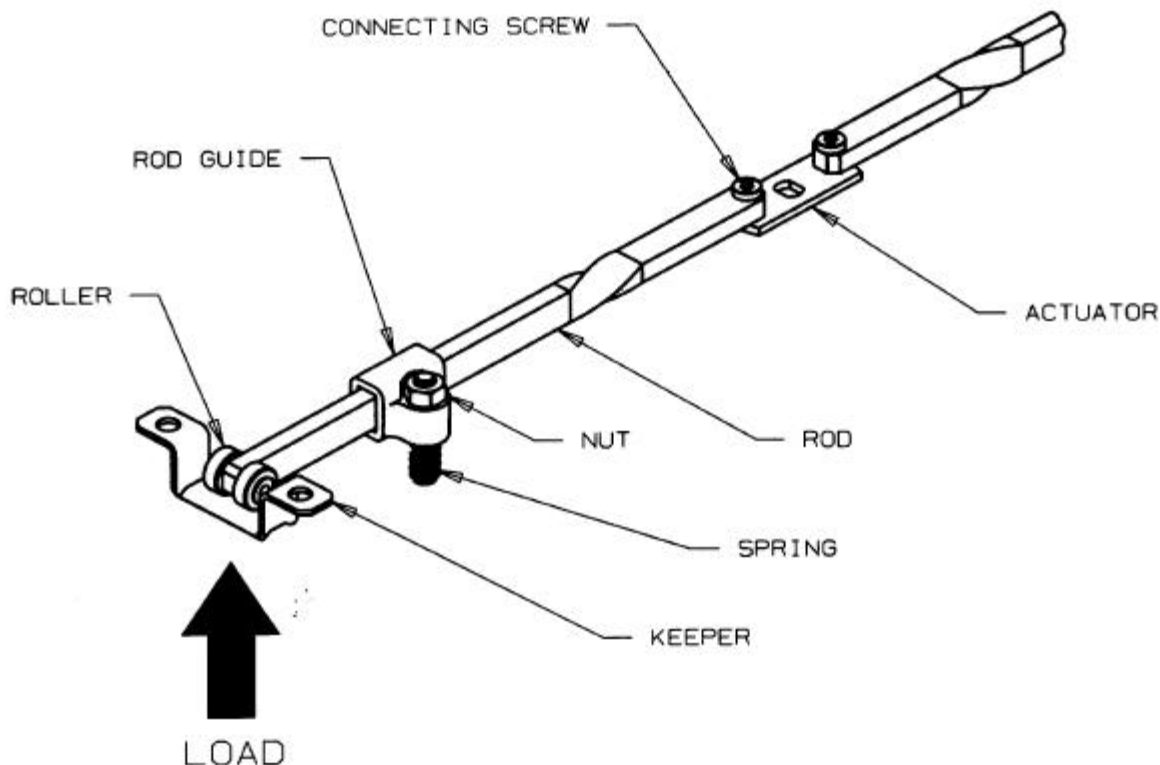


GENERAL PERFORMANCE GUIDELINES

The information shown on this page was determined under one set of test conditions and is supplied as a general guide only, as conditions vary with each application. Strength data given is for failure of the product or for sufficient deformation to make the product inoperable. No factor of safety has been applied. It is recommended that the user test the product for his particular application.



PART NUMBER	MAXIMUM RECOMMENDED WORKING LOAD N (LBS) ①	ULTIMATE LOAD N (LBF) ②	MAXIMUM RECOMMENDED TIGHTENING TORQUE ON CONNECTING SCREWS N·cm (IN-LBS)
AB- ¹⁰ / ₁₁ -XXXX	225 (50)	1200 (270)	150 (13)

XXXX = LENGTH OF ROD

*CYCLE LIFE of rod roller assembly is in excess of 10,000 cycles.

- ① WORKING LOAD is the maximum load that the product will withstand without affecting the operation or appearance of the product.
- ② ULTIMATE LOAD causes failure of the product or sufficient deformation to make the product inoperable.