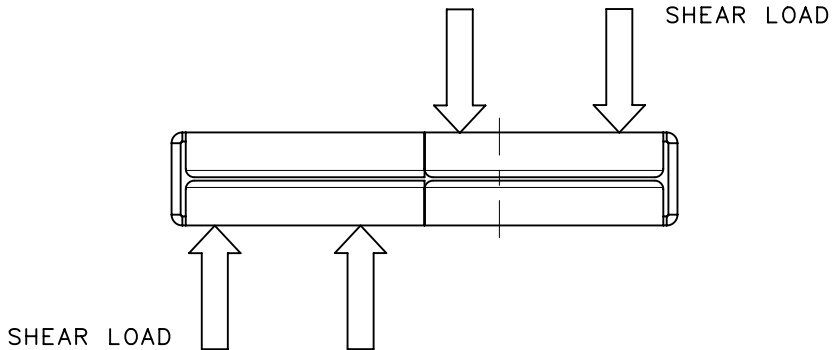


REVISION HISTORY			
REV	DATE	BY	DESCRIPTION
A	31OCT2018	DKM/DMS	PRN: P2018-2524

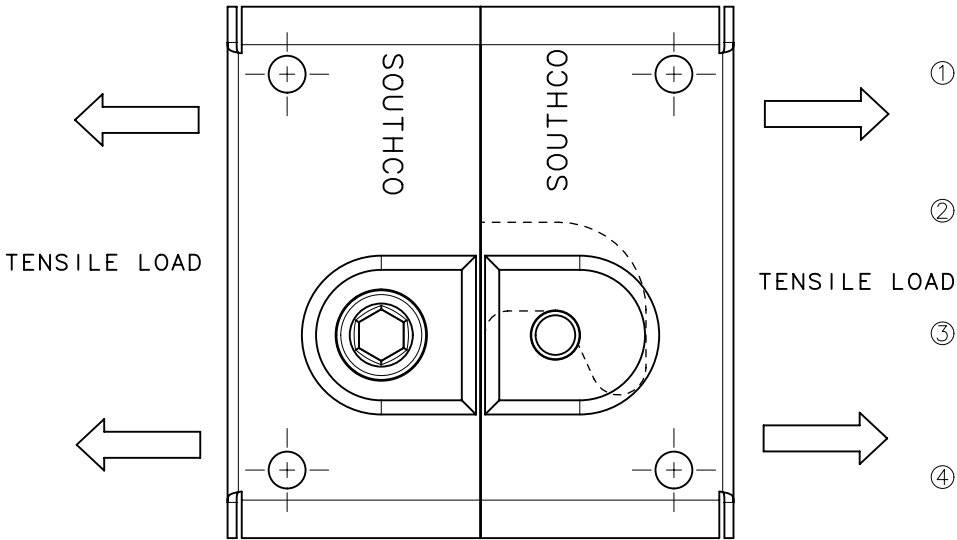


SOUTHCO PERFORMANCE GUIDELINES

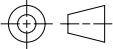

THE PERFORMANCE GUIDELINES SHOWN ON THIS PAGE ARE SUPPLIED AS A GENERAL GUIDE ONLY, AS CONDITIONS VARY WITH EACH APPLICATION AND METHOD OF INSTALLATION. STRENGTH DATA GIVEN IS FOR FAILURE OF THE PRODUCT OR FOR SUFFICIENT DEFORMATION TO MAKE PRODUCT INOPERABLE. NO SAFETY FACTOR HAS BEEN APPLIED IT IS RECOMMENDED THAT THE USER REQUEST A PRODUCT SAMPLE FOR TESTING TO DETERMINE THE SUITABILITY OF THE PRODUCT FOR THE PURPOSE INTENDED AND USER'S PARTICULAR APPLICATION.

PART NUMBER	AVERAGE ULTIMATE TENSILE LOAD ①	AVERAGE ULTIMATE SHEAR LOAD ②
LATCH R5-0074-XX	15300 N	76920 N
RECEPTACLE R5-0079-XX	(3439 lbf)	(17292 lbf)

THE LATCHES AND RECEPTACLES TESTED WERE MADE FROM STEEL.



- ① AVERAGE ULTIMATE TENSILE LOAD causes failure of the product or sufficient deformation to make the product inoperable. Failure occurred when the mounting screws bent/broke and the housings deformed.
- ② AVERAGE ULTIMATE SHEAR LOAD causes failure of the product or sufficient deformation to make the product inoperable. Failure occurred when the housing and hooks deformed.
- ③ INITIAL OPERATING FORCE at zero cycles, is the average amount of torque required of the hex wrench to fully open and close the latch without any gasketing materials used between the panels. TO OPEN: 4 Nm (34.5 in lbs), TO CLOSE: 5 Nm (42.5 in lbs).
- ④ CYCLE LIFE: Latches completed 10,000 cycles with no loss of function and only small wear marks observed on the receptacle pin. One cycle = closed position when the hook is completely tightened around the pin in the receptacle, then returned completely to the latch housing. The cycle testing was conducted at 21°C (70°F), without any gasketing materials used between the panels.

CPB NUMBER	THIRD ANGLE PROJECTION 	 CONNECT • CREATE • INNOVATE	
	MILLIMETERS [IN]		
SURFACE AREA	TOLERANCES UNLESS OTHERWISE NOTED	DESCRIPTION	
VOLUME	ALL DIMENSIONS WITHOUT TOLERANCES ARE FOR REFERENCE ONLY.	NO. R5 DUAL LOCK BUTT-JOINT PANEL FASTENER	
PROPRIETARY ITEM	SIZE A4	SYSTEM NX	DWG NO. TD-R5-1-J
EXCEPT FOR USES EXPRESSLY GRANTED IN WRITING, INFORMATION DISCLOSED HEREON IS CONFIDENTIAL AND ALL RIGHTS, PATENT AND OTHERWISE, ARE RESERVED BY SOUTHCO, INC.	PER ASME Y14.5M-1994	DRAWN BY MJS/JSS	DATE 28JAN2006
		SCALE 0.75:1	SHEET 1 OF 1

REFERENCE: R5-15